



## SS800L / GD093

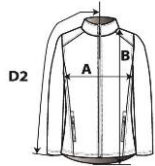
### Hammer Ladies Softshell Jacket

**DETAILS**

**Weight**  
**Content**  
**Features**

300.0 G/SqM  
92% Polyester, 8% Elastane  
Sideseamed  
Reverse coil front zipper  
2 front hand pockets with reverse coil zippers  
6" storm flap at front zipper  
Drop tail hem construction  
Semi-fitted  
3 layer waterproof, breathable fabric with micro-fleece inner layer  
Breathable membrane 6000 mm  
Windproof  
Stretch fabric  
Tear away label  
Myanmar  
S-4XL  
S - 4XL 12 PIECES  
8  
56

**Country of Origin**  
**Sizes**  
**Case Packs**  
**Colours**  
**SKU's**



**SPECIFICATIONS**

Centimeters	Tol-	Tol+	S	M	L	XL	2XL	3XL	4XL
<b>Chest (A)</b>	1.270	1.270	46.355	49.530	52.705	55.880	59.055	62.230	65.405
<b>Length from HPS (B)</b>	1.905	1.905	59.055	60.960	62.865	64.770	66.675	68.580	70.485
<b>Sleeve length (Centre cap to incl.cuffs) (D2)</b>	1.270	1.270	60.008	60.960	61.913	62.865	63.818	64.770	65.723
Inches	Tol-	Tol+	S	M	L	XL	2XL	3XL	4XL
<b>Chest (A)</b>	0.500	0.500	18.250	19.500	20.750	22.000	23.250	24.500	25.750
<b>Length from HPS (B)</b>	0.750	0.750	23.250	24.000	24.750	25.500	26.250	27.000	27.750
<b>Sleeve length (Centre cap to incl.cuffs) (D2)</b>	0.500	0.500	23.625	24.000	24.375	24.750	25.125	25.500	25.875

COLOURS	Code	Sizes
Black	036	S-4XL
Charcoal	042	S-4XL
Forest Green	033	S-4XL
Navy	032	S-4XL
Orange	037	S-4XL
Red	040	S-4XL
Royal	051	S-4XL
Safety Green	188	S-4XL

**CHANGES**  
Total Net Change 0 SKU's