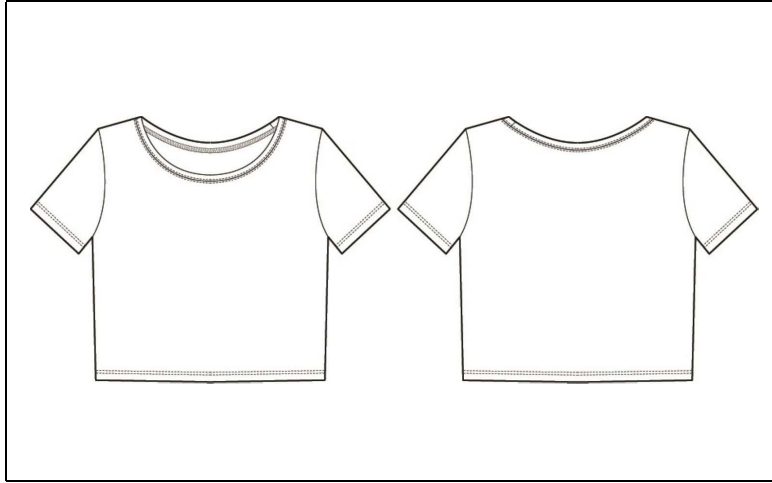


BELLA+CANVAS®

MEASUREMENT SPECIFICATION REPORT



STYLE # 6681 WOMEN'S POLY-COTTON CROP TEE

FABRICATION

52% Combed and Ring-Spun Cotton, 48% Polyester
52% Combed and Ring-Spun Cotton, 48% Polyester

Point of Measurement (centimeters)

Body Length From HPS
Body Width - 1" Below A.H.

| | XS/S | M/L |
|----------------------------|-------------|------------|
| Body Length From HPS | 41.9 | 44.5 |
| Body Width - 1" Below A.H. | 39.7 | 43.5 |

Disclaimer: Please note that the above sizing chart is subject to change. For more detailed information, please contact a Bella + Canvas Customer Service Representative.

BE DIFFERENT

NO C.O.E. | NO SWEATSHOPS | W.R.A.P. CERTIFIED | RETAIL QUALITY



BELLACANVAS.COM | 6670 FLOTILLA STREET | LOS ANGELES, CA 90040 | 855 363 2200 | SALES@BELLACANVAS.COM