

# B&C SHIELD SOFTSHELL PRO > JU C42

regular fit



**OUTER  
WEAR  
/UNIT**






Reflective piping at shoulder panels and bottom back for enhanced visibility

Seamless shoulder panels for better comfort and waterproofness

Reinforced patches (black) on shoulders & elbows and rear hem





Longer back for freedom of movement + warmth and protection when bending or kneeling


-  BLACK (002)
-  NAVY (003)
-  DARK GREY (670)

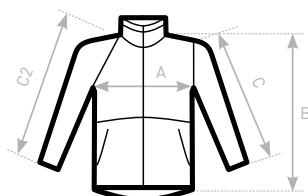


- Micro-fleece inner layer for extra warmth
- Ergonomic construction for best ease of movement enhanced thanks to fabric elasticity
- 5 multi-use and spacious pockets (3 outer + 2 inner)
- Adjustable bottom hem with drawcords and stoppers
- Full decoration access in front + back and sleeves

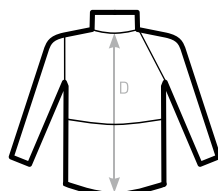
-  OUTER LAYER: 96% polyester  
4% elastane mini rip-stop
- MID LAYER: Bonded TPU membrane breathable, windproof and waterproof
- INNER LAYER: 100% polyester micro-fleece
- WATERPROOF: 2000 MM**
- BREATHABLE: 1000 MVP**

 S - M - L - XL - 2XL - 3XL - 4XL

 1 pc/pack & 10 pcs/carton



C2= RAGLAN SLEEVE



SIZES

B&C SHIELD SOFTSHELL PRO JU C42	S	M	L	XL	2XL	3XL	4XL
A HALF CHEST	51	54	57	60	63	66	69
B BODY LENGTH FROM NECK POINT	71	72,5	74	75,5	77	78,5	80
C SLEEVE LENGTH	63	64,5	66	67,5	69	70,5	72
D CENTER BACK LENGTH	75	76,5	79	79,5	81	82,5	84

## PROTECTION

- / Waterproof 2000mm, breathable 1000g/m<sup>2</sup>, windproof and thermo-insulated mini rip-stop softshell
- / TPU membrane mid layer for breathability, wind and waterproofing
- / micro-fleece inner layer for extra warmth
- / Standing collar, full length internal stormflap and chin protector for windproofing
- / Longer back for freedom of movement, warmth and protection when bending or kneeling
- / Reflective piping at shoulder panels and bottom back for enhanced visibility
- / Seamless shoulder panels for better comfort and waterproofness

## DURABILITY

- / Reinforced patches on shoulders, elbows and rear bottom in nylon Oxford, ensure increased resistance to abrasion and tears
- / Resistant rip-stop structure outer layer
- / Double topstitched seams for extra durability
- / Long lasting high quality SBS zipper

## STYLE AND FIT

- / High performance 3 layer rip-stop PRO softshell jacket
- / Modern and strong look
- / Carefully designed ergonomic construction for best ease of movement, enhanced thanks to fabric elasticity
- / Articulated sleeves to ensure a natural working position
- / Adjustable cuffs with closing tabs for better fitting body shapes

## FUNCTIONALITY

- / Multi-use and spacious pockets:
  - 2 easy access warm front pockets with zips and overlap to safely store your tools and goodies
  - 1 right chest pocket with zipper garage
  - 2 large and comfortable inner pockets

## DECORATION

- / Full decoration access in front, back and sleeves

## DETAILS

- / Self fabric inner collar
- / Adjustable bottom hem with drawcords and stoppers
- / Set-in sleeves

**B&C PRO / JUST KEEP WORKING**