

# B&C Heritage LSL / women - SW P43

THE SHIRT CULTURE  
BE INSPIRED



THE SHIRT CULTURE  
BE INSPIRED



## ADJUSTED FIT

- Fine 100% cotton poplin with **Easy Care** finish
- Soft feminine collar
- Cross stitched mother-of-pearl effect buttons
- 2-button cuffs
  - a. Straight cuffs & thin square-shaped gauntlets
  - b. French cuff option
- Darts at bustline & back panel for a feminine shape
- Horizontal last buttonhole
- Curved bottom hem



100% **combed** cotton  
Poplin  
**EASY CARE**

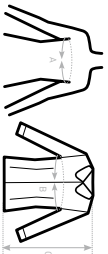
- 120 g/m<sup>2</sup> (white) - 125 g/m<sup>2</sup> (colour)
- XS > 4XL
- 1 pc/ pack & 10 pc/ carton



**DUO CONCEPT**  
with B&CHeritage LSL/ men

## SIZES (CM)

B&C HERITAGE LSL / M. SW P43		XS	XS	S	M	L	XL	2XL	3XL	4XL	5XL	6XL
A. DRESS SIZE	34	36	38	40	42	44	46	48	50	54	-	-
	40	42	44	46	48	50	52	54	56	-	-	-
B. CHEST SIZE	86	88	90	92	94	96	98	100	104	-	-	-
	92	94	96	98	100	102	104	106	110	-	-	-
C. CENTER BACK LENGTH	66	68	70	72	74	76	78	80	84	-	-	-
	72	74	76	78	80	82	84	86	90	-	-	-



## PURE COTTON WOMEN'S LONG SLEEVED EASY CARE

### COMFORTABLE POPLIN SHIRT **EASY CARE**

